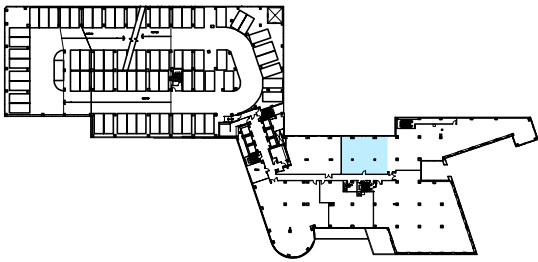


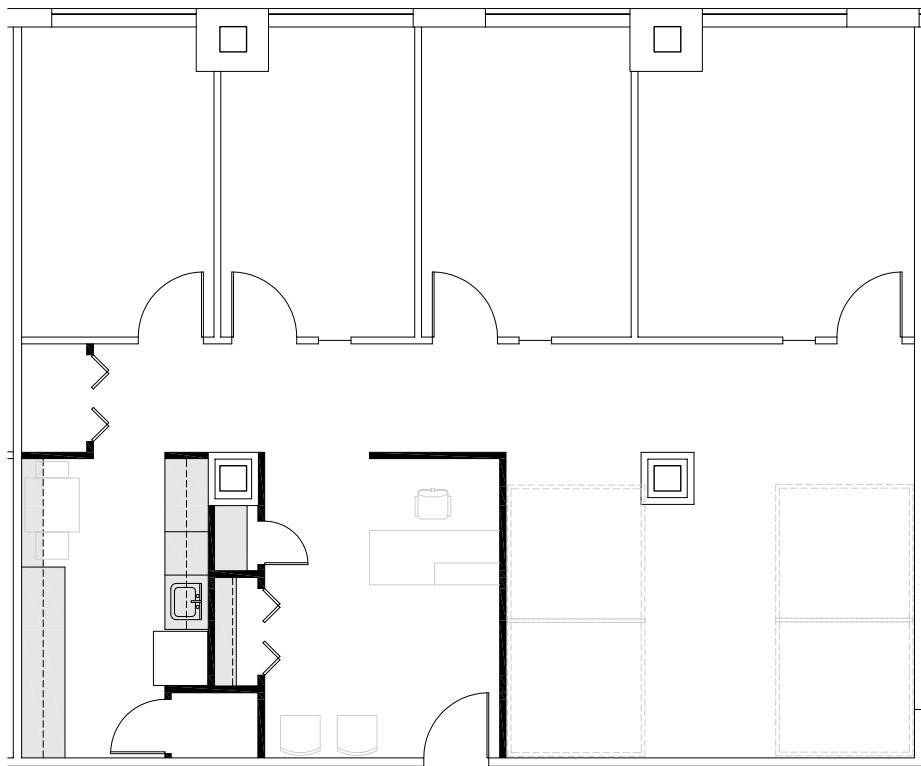
# 7200 WISCONSIN AVENUE

FLOOR PLAN



Wisconsin Ave

Bethesda Ave.



**Suite 302**  
**Move-in Ready Spec Suite**  
**1,684 SF**



THE JBG COMPANIES®



[JBGBrokerRewards.com](http://JBGBrokerRewards.com)

Quinn Rounsaville  
t 240.333.3752  
e [grounsaville@jbg.com](mailto:grounsaville@jbg.com)

Kaitlyn Rausse  
t 240.333.3835  
e [krausse@jbg.com](mailto:krausse@jbg.com)