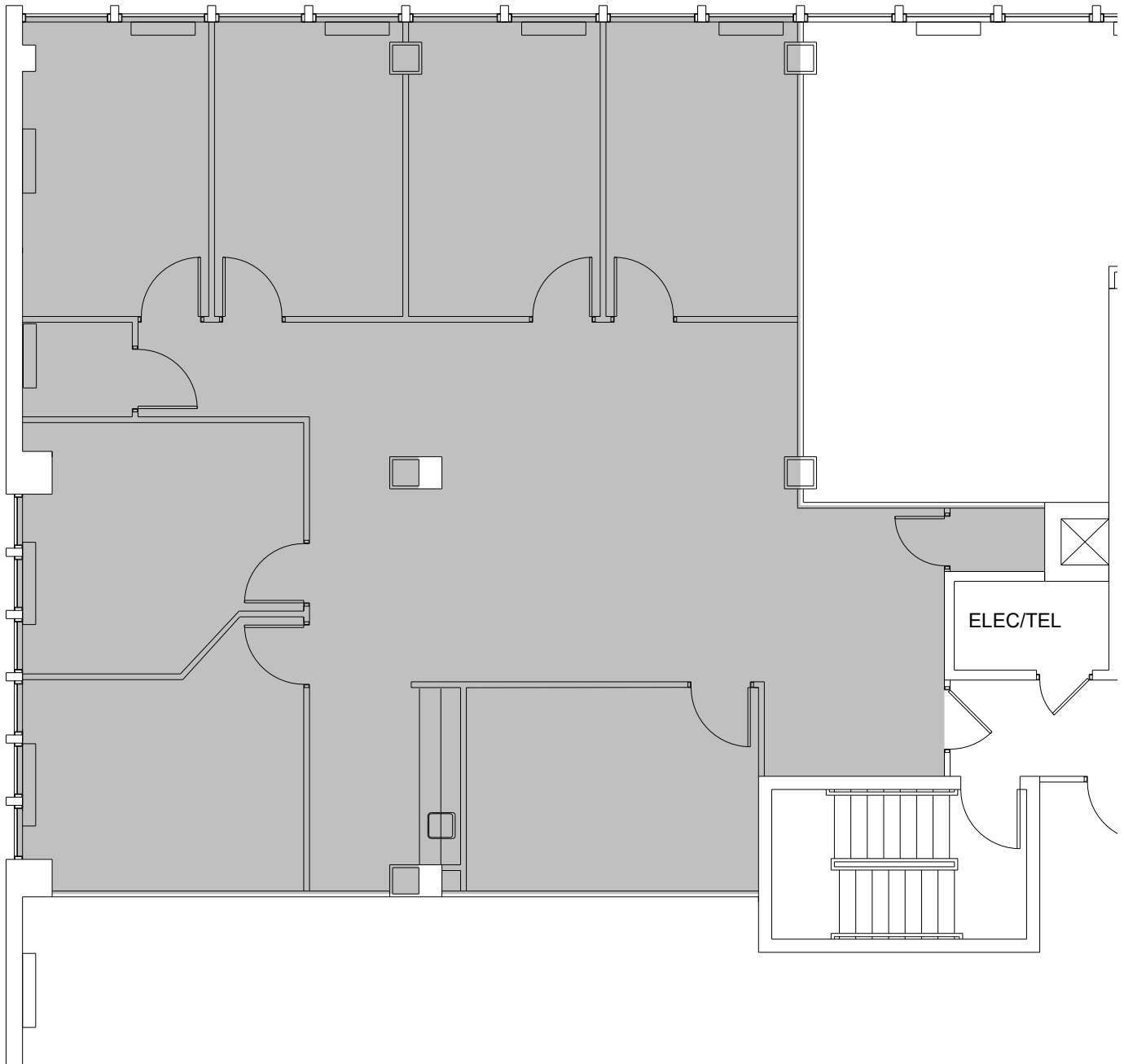


1901 N Fort Myer Drive

Suite 702

Approx: 2,243 SF

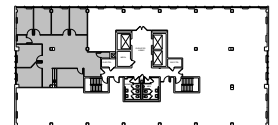


Leasing Contacts:

Kristen Scharer
240.333.7661

Leanne Berthiaume
240.333.7664

kscharer@jbgsmith.com lberthiaume@jbgsmith.com



ROSSLYN GATEWAY SOUTH
1901 FORT MYER DRIVE
7TH FLOOR PLAN

